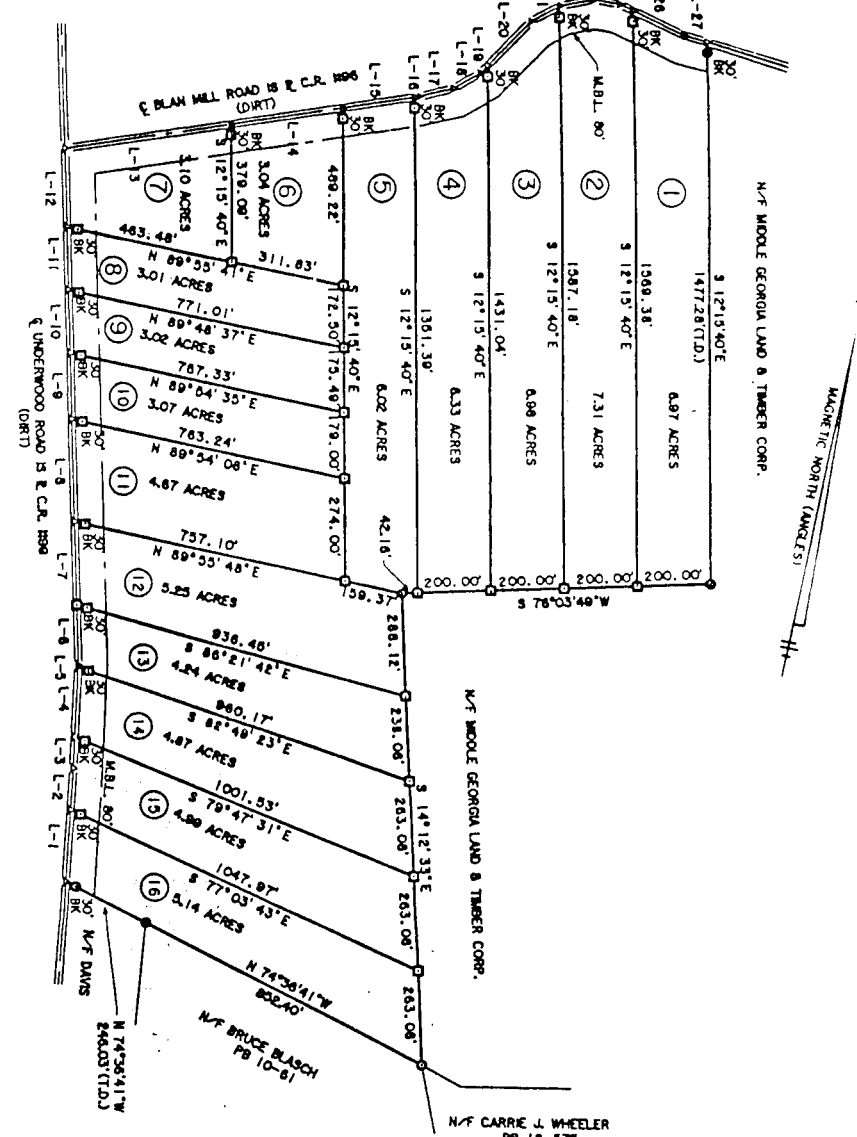
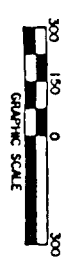


Blan Mill

COURSE	BEARING	DISTANCE	COURSE	BEARING	DISTANCE
L-1	N 07°43'39"W	200.00'	L-14	N 89°28'13"E	304.00'
L-2	N 07°43'39"W	114.26'	L-15	N 89°28'13"E	200.00'
L-3	N 07°43'39"W	82.74'	L-16	N 89°28'13"E	200.00'
L-4	N 07°43'39"W	200.00'	L-17	N 89°28'13"E	81.82'
L-5	N 07°43'39"W	200.00'	L-18	N 44°18'31"E	84.70'
L-6	N 13°31'41"W	187.36'	L-19	N 32°55'42"E	28.30'
L-7	N 13°31'41"W	223.00'	L-20	N 50°08'49"E	172.18'
L-8	N 13°31'41"W	273.00'	L-21	N 50°08'49"E	87.74'
L-9	N 13°31'41"W	180.00'	L-22	N 67°24'23"E	3.41'
L-10	N 13°31'41"W	175.00'	L-23	N 67°24'23"E	88.43'
L-11	N 13°31'41"W	214.70'	L-24	N 73°41'20"E	38.35'
L-12	N 13°31'41"W	402.29'	L-25	N 73°41'20"E	194.08'
L-13	N 89°28'13"E	402.29'	L-26	N 89°28'13"E	194.08'
			L-27	S 80°44'56"E	84.00'



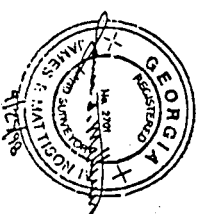
PLAT FOR
GEO-TEX INVESTMENTS INC.
 117 GMD, 78.00 ACRES
 HANCOCK COUNTY, GEORGIA

SCALE 1" = 300' SEPTEMBER 27, 1998
 MAP CHECK 1/4, 3/78, 894
 TRAVELER CLOSURE 1/8, 288
 1/8" PER POINT
 ADJUSTED PER POINT
 TOPCON #119

- ⊙ - 1" PRE SET
- △ - NAIL SET & OF DIRT ROAD
- - REBAR FOUND
- ⊠ - 1/2" REBAR SET

THIS PLAT IS SUBJECT TO ALL EASEMENTS,
 RIGHTS-OF-WAY AND PROTECTIVE COVENANTS
 OF RECORD.

THIS PROPERTY IS FOR RESIDENTIAL PURPOSES.



JAMES F. MATTISON, IV, R.L.S., RT201
 P.O. BOX 714
 LINDCANTON, GEORGIA 30817
 (706) 359-1428

210024