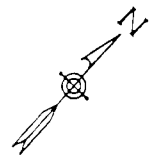
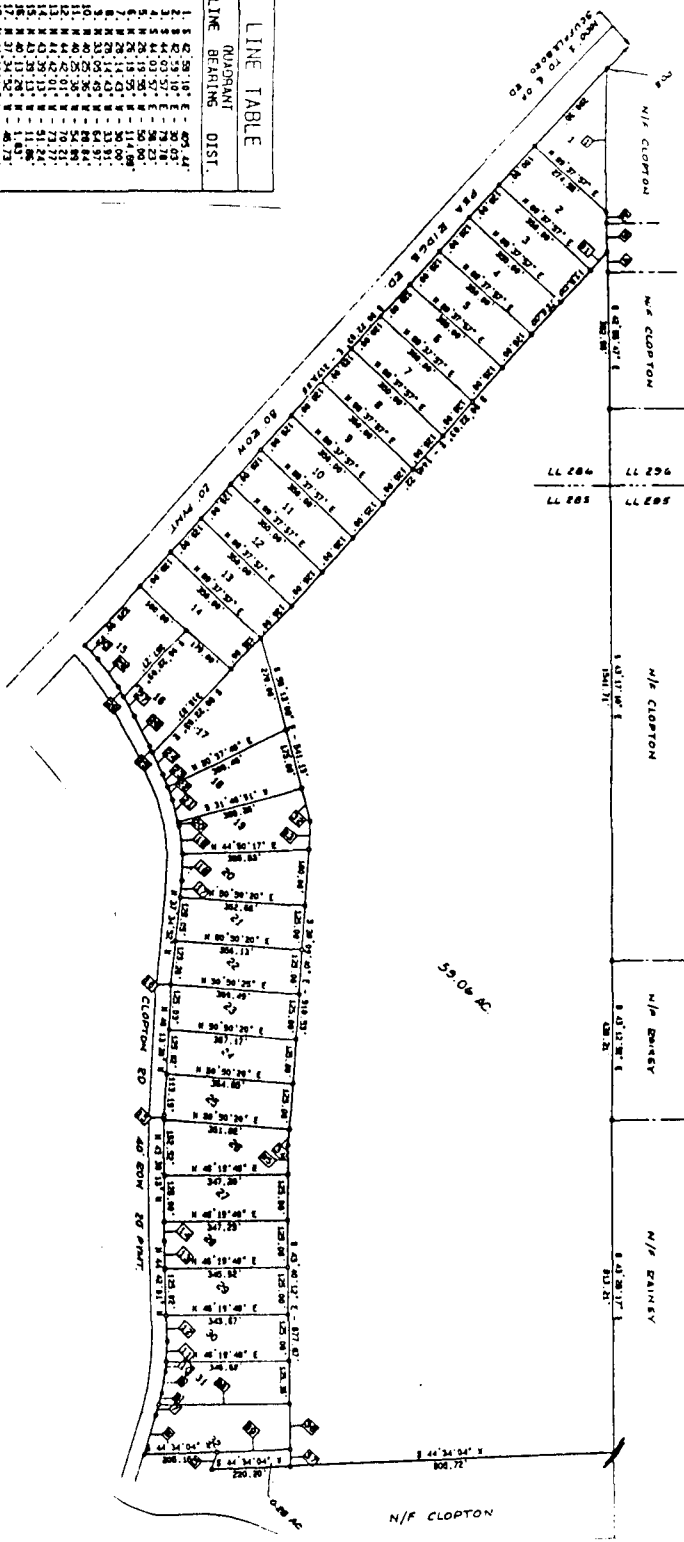


Clopton Ridge

LINE	BEARING	DIST.
1	S 89° 10' E	608.44'
2	S 89° 10' E	30.03'
3	S 89° 10' E	79.18'
4	S 89° 10' E	50.00'
5	S 89° 10' E	50.00'
6	S 89° 10' E	114.88'
7	S 89° 10' E	30.00'
8	S 89° 10' E	64.91'
9	S 89° 10' E	64.91'
10	S 89° 10' E	70.21'
11	S 89° 10' E	71.77'
12	S 89° 10' E	1.84'
13	S 89° 10' E	2.72'
14	S 89° 10' E	12.83'
15	S 89° 10' E	79.64'
16	S 89° 10' E	40.00'
17	S 89° 10' E	21.32'
18	S 89° 10' E	43.72'
19	S 89° 10' E	43.72'
20	S 89° 10' E	54.42'
21	S 89° 10' E	54.42'
22	S 89° 10' E	60.00'
23	S 89° 10' E	60.00'
24	S 89° 10' E	72.78'
25	S 89° 10' E	205.29'



ADVERTISING BY RETAILERS THAT IS FOR HOME USE ONLY

CONRY AND ASSOCIATES

PUTNAM COUNTY GEORGIA LAND
 LOTS 285, 286
 2ND LAND DISTRICT

1 SHEET - 200 SHEETS

LOT NO.	AREA
1	1.14 AC
2	1.00 AC
3	1.00 AC
4	1.00 AC
5	1.00 AC
6	1.00 AC
7	1.00 AC
8	1.00 AC
9	1.00 AC
10	1.00 AC
11	1.00 AC
12	1.00 AC
13	1.00 AC
14	1.00 AC
15	0.98 AC
16	1.12 AC
17	1.51 AC
18	1.15 AC
19	1.02 AC
20	1.02 AC
21	1.03 AC
22	1.03 AC
23	1.02 AC
24	1.02 AC
25	1.00 AC
26	1.00 AC
27	0.99 AC
28	0.99 AC
29	0.98 AC
30	1.02 AC
31	1.18 AC
32	1.18 AC

