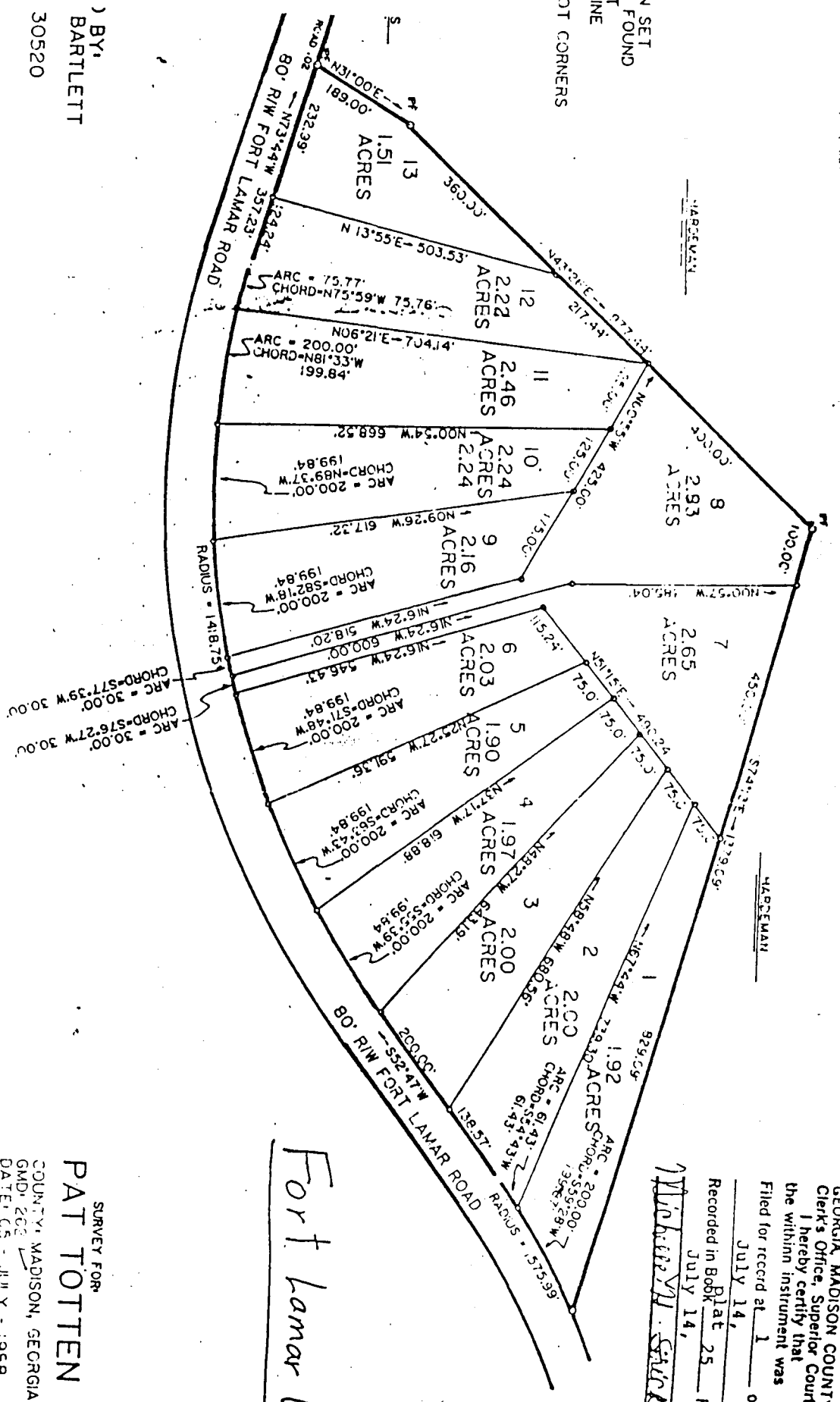
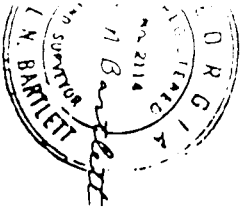


IRON PIN SET
 OFF SET
 CENTER LINE
 ON ALL LOT CORNERS

Ft. Lamar

BY:
 BARTLETT
 MADISON, GA. 30520
 404 4488



Fort Lamar Wood

GEORGIA, MADISON COUNTY
 Clerk's Office, Superior Court
 I hereby certify that
 the within instrument was
 Filed for record at 1 o'clock P
 July 14, 198
 Recorded in Book 25 Folio 125
 July 14, 198
 Michael V. Stuckland
 Clerk

SURVEY FOR
 PAT TOTTEN
 COUNTY, MADISON, GEORGIA
 GMD: 202
 DATE: 05 - JULY - 1958
 SCALE: 1" = 200'
 FB: 128
 JCS: PT2

THE SURVEY MADE WITH A TOPCON GTS-28 TOTAL STATION
 THE ANGULAR ERROR IS 0.0" FOR 1000 FEET
 THE PRECISION RATIO IS 1 PART IN 200000
 THE PLAT IS UNBALANCED.