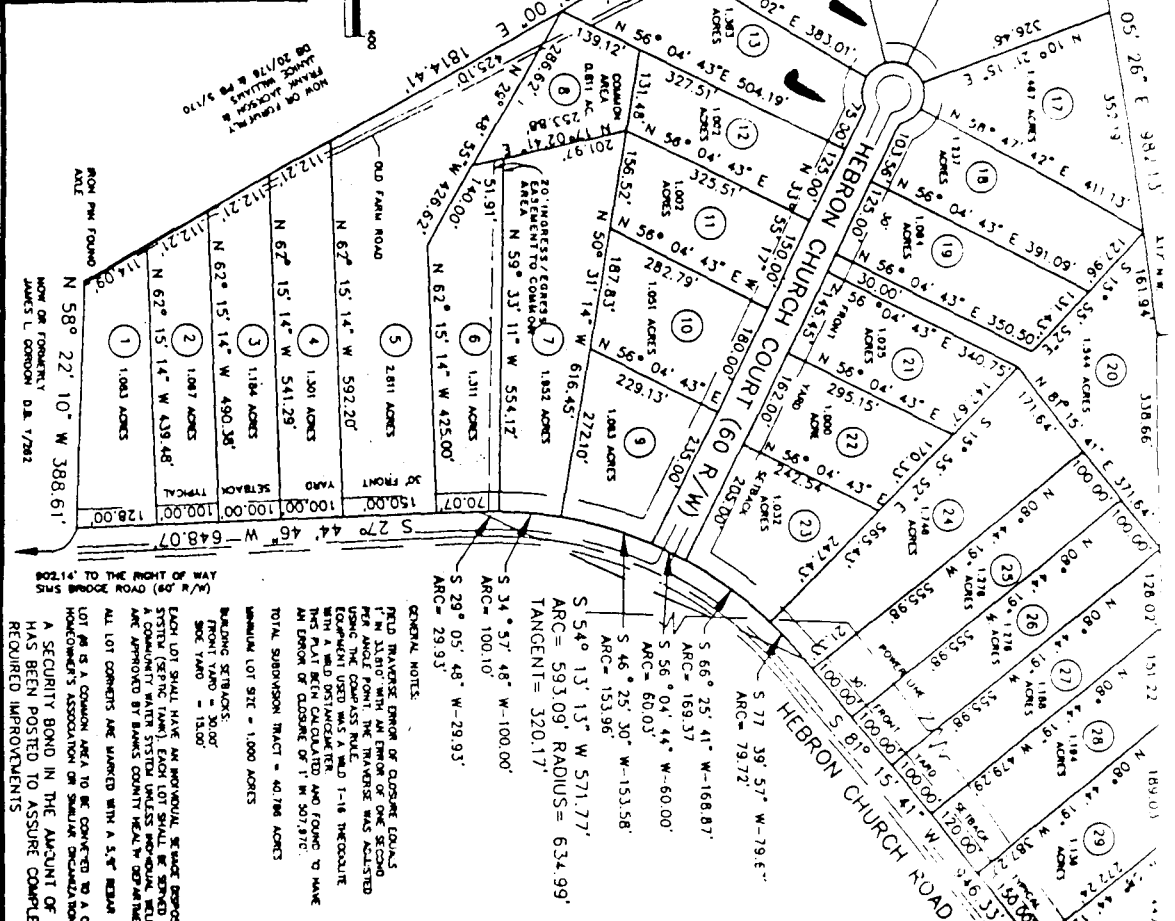
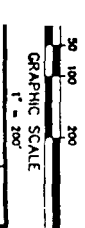
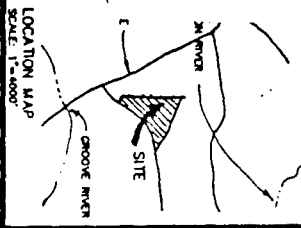


Hebron Oaks



GENERAL NOTES:

FIELD REVERSE ERROR OF CLOSURE EQUALS 1.76 IN. ADJUSTED WITH AN ERROR OF ONE SECOND PER ANGLE POINT. THE REVERSE WAS CALCULATED FROM THE ADJUSTED ANGLES. THE REVERSE WITH A WILD DISTANCE/ANGLE WAS CALCULATED WITH A WILD DISTANCE/ANGLE AND FOUND TO HAVE AN ERROR OF CLOSURE OF 1.1 W/0.87%.

TOTAL SUBDIVISION TRACT = 40.786 ACRES

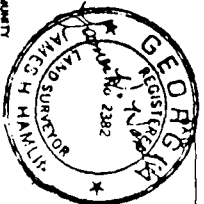
MINIMUM LOT SIZE = 1.000 ACRES

REARING STRIPES:
FRONT YARD = 30.00'
SIDE YARD = 15.00'

EACH LOT SHALL HAVE AN APPROVAL, STAKE, EMBOSSED, STITCHED (SPRING TOWN) EARTH LOT SHALL BE SET BY A COMMUNITY WATER SYSTEM UNLESS PROVIDED, WELLS ARE APPROVED BY BANKS COUNTY HEALTH DEPARTMENT.

ALL LOT CORNERS ARE MARKED WITH A 5.5" REBAR.

LOT #1 IS A COMMON AREA TO BE CONVEYED TO A COMMUNITY HOMEOWNERS ASSOCIATION ON SMALLER PARCELS. A SECURITY BOND IN THE AMOUNT OF \$14,000.00 HAS BEEN POSTED TO ASSURE COMPLETION OF REQUIRED IMPROVEMENTS.



OWNER'S CERTIFICATION:

THE OWNER OF THE LAND SHOWN ON THIS PLAT AND WHOSE NAME IS SUBSCRIBED HEREON, IN PERSON OR THROUGH A DULY AUTHORIZED AGENT, CERTIFIES THAT THIS PLAT WAS MADE FROM AN ACTUAL SURVEY.

AGENT: *Kevin Allen* OWNER: *Somma Investments, Inc.*
DATE: *July 23, 1989* DATE: *July 23, 1989*

CERTIFICATE OF APPROVAL OF THE FINAL PLAT:

PURSUANT TO THE LAND SUBDIVISION RESOLUTION OF BANKS COUNTY, GEORGIA, ALL REQUIREMENTS OF THE APPROVAL HAVING BEEN FULFILLED, THIS FINAL PLAT WAS GIVEN FINAL APPROVAL, BEING THAT THIS PLAT IS RELEASED FOR RECORDING AND FOR USE IN SALE OF LAND DESCRIBED HEREON.

SECRETARY, BANKS COUNTY PLANNING COM.:

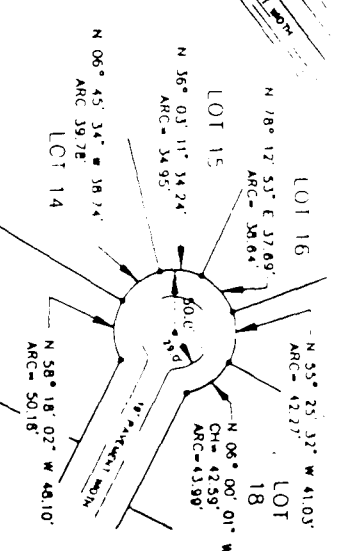
FINAL PLAT FOR:
HEBRON OAKS SUBDIVISION
DAVIDS (207) G.M.D. BANKS COUNTY GEORGIA

PREPARED FOR:
SOMMA INVESTMENTS, INC. (OWNER OF RECORD)
P.O. BOX 610985 - SUITE 200 - 12000 BISCAYNE BLVD.
NORTH MIAMI, FL 33181 TELEPHONE: 800/327-9940

PREPARED BY:
LAND SURVEYING SERVICES, INC.
9755 DODDWOOD ROAD - SUITE 109
ROSWELL, GA 30075 TELEPHONE: 404/641-9548
DATE: 06/23/89

BANKS COUNTY PLANNING COMMISSION APPROVED
DATE: 6-23-89

CUL DE SAC DETAIL



PB 15 PGS