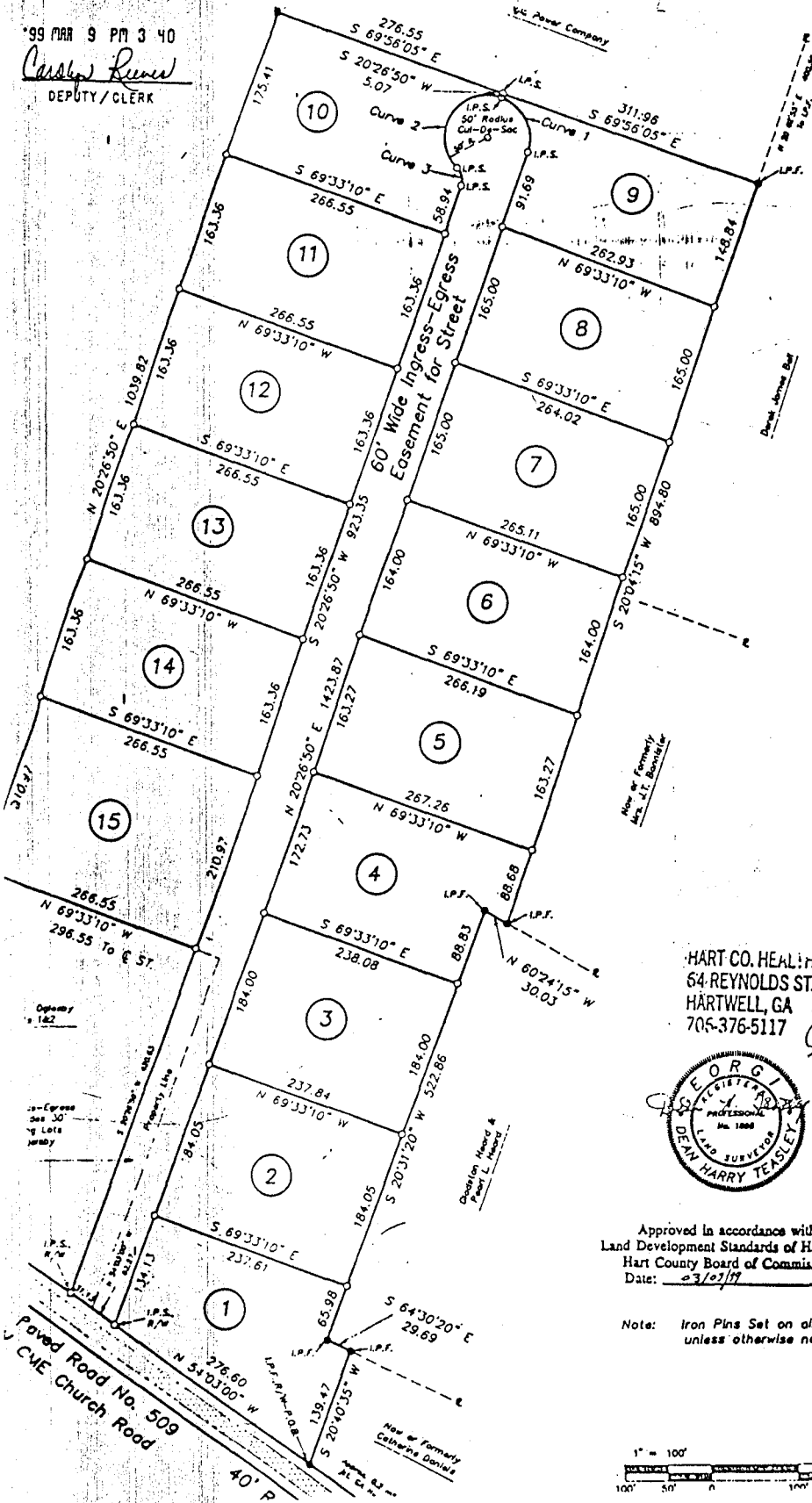


99 MAR 9 PM 3 40

*Carolee Rives*  
DEPUTY/CLERK

DATE 3-9-99  
W.E. HOLLAND, II, CLERK

RECORDED  
BOOK 26 PAGE 122  
DATE 3-9-99



① Denotes Lot

Lot No.	A
1	= 1.00
2	= 1.00
3	= 1.00
4	= 1.00
5	= 1.00
6	= 1.00
7	= 1.00
8	= 1.00
9	= 0.91
10	= 1.01
11	= 1.00
12	= 1.00
13	= 1.00
14	= 1.00
15	= 1.29

Curve Data

Curve 1	
Delta	- 90°
Radius	- 50
Arc	- 78
Chord	- 70
Tangent	- 50
Curve 2	
Delta	- 15
Radius	- 50
Arc	- 13
Chord	- 97
Tangent	- 22
Curve 3	
Delta	- 64°
Radius	- 20
Arc	- 22
Chord	- 21
Tangent	- 12

HART CO. HEALTH UNIT  
64 REYNOLDS ST.  
HARTWELL, GA 30643  
706-376-5117



*Denhart*  
APPROVED

Approved in accordance with the  
Land Development Standards of Hart County  
Hart County Board of Commissioners  
Date: 2/3/99

Note: Iron Pins Set on all Corners  
unless otherwise noted.

