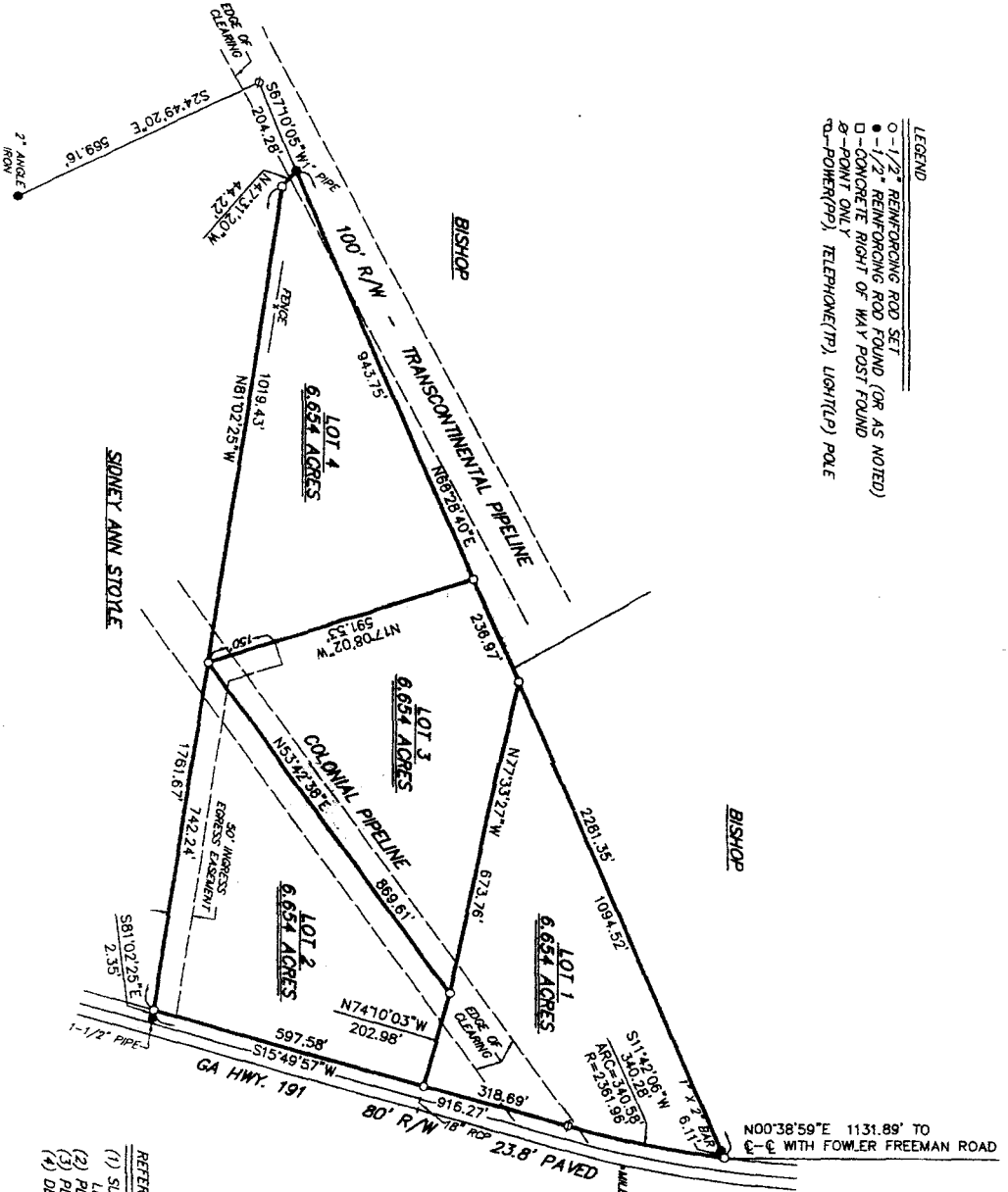




- LEGEND
- - 1/2" REINFORCING ROD SET
  - - 1/2" REINFORCING ROD FOUND (OR AS NOTED)
  - - CONCRETE RIGHT OF WAY POST FOUND
  - ⊙ - POINT ONLY
  - ⊖ - POWER(PP), TELEPHONE(TP), LIGHT(LP) PALE

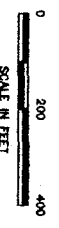
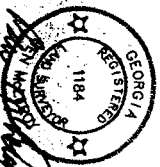


COPY

APPROVED  
 NAME: MICHELLE H. STRICKLAND  
 TITLE: COUNTY CLERK  
 MADISON COUNTY  
 ZONING ADMINISTRATION  
 DATE: 06/20/2006  
 TIME: 01:15 PM  
 P. 005A

Lot 1 Paved 63-3  
 Lot 2 Paved 63-01  
 Lot 3 Paved 63-02  
 Lot 4 Paved 63-3

REVISED 5 JUNE 2006 TO  
 DIVIDE INTO 4 LOTS AS SHOWN



MICHELLE H. STRICKLAND  
 County Clerk, MADISON County, GA.  
 065200600157  
 P. 005A

- REFERENCES
- (1) SURVEY BY A.P. STEVENS, JR. FOR MRS. WILLIE LEE WHITE BORDEN DATED FEB. 14, 1958
  - (2) PLAT BOOK 8123 PAGE 58
  - (3) PLAT BOOK 39 PAGE 189
  - (4) DEED BOOK 201 PAGE 81

- SURVEY NOTES
- (1) EQUIPMENT USED: 02" THEODOLITE AND E.O.M.
  - (2) ANGULAR ERROR: 00" PER STATION, ADJUSTED
  - (3) LINEAR CLOSURE: 1/103 605, BALANCED BY LEAST SQUARES
  - (4) MINIMUM PLAT CLOSURE: 1/228,526

LAND HEADQUARTERS

COUNTY: MADISON		G.M.D.: 438		STATE: GEORGIA	
DATE: 31 MARCH 2006	SCALE: 1"=200'	DWN. BY: STEPHEN			
FIELDBOOK: 831		SURVEYED BY: SMI, HILBROY & ASSOCIATES, INC.		FILE NO.: 29596-	
		140 MILL CENTER BLDG. 8060401, GA.			