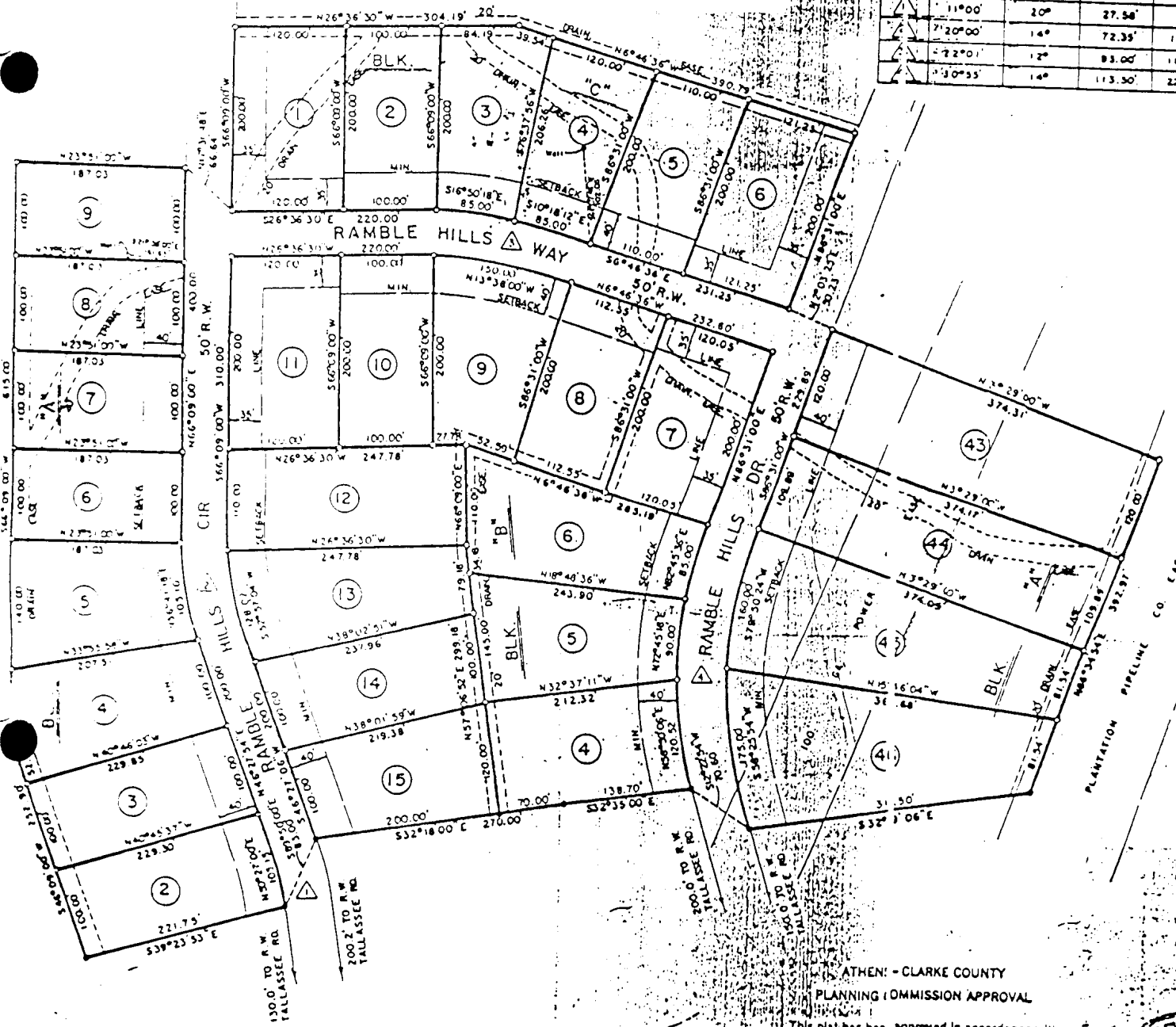


Ramble Hills

CURVE DATA				
NO.	DEF.	DEG.	TAN.	LEN.
1	11°00'	20'	27.58'	93.00'
2	7°20'00"	14°	72.35'	142.86'
3	7°20'00"	12°	83.00'	183.47'
4	7°30'35"	14°	113.50'	220.80'



ATHENS - CLARKE COUNTY
PLANNING COMMISSION APPROVAL

THIS IS A FINAL PLAT.
Approval by the Planning
Commission authorizes
recording by the Clerk
of the Superior Court.

This plat has been approved in accordance with
the Clarke County Subdivision Regulations on
the 18th day of May, 1984
[Signature]
Planning Director



RAMBLE HILLS SUBDIVISION

SECTION TWO

COUNTY: CLARKE L.S.B. NO.: 1347 STATE: MISSISSIPPI

SCALE: 1" = 100' DATE: OCT. 17, 1983

LANDMARK ENGINEERING CORPORATION
HOLLAND REG SURVEYOR NO. 1087 ATHENS, GA

I hereby certify, this plat has not been
violated in any way and the same complies
with the minimum standards and requirements of law.
[Signature]
Mississippi Land Surveyor No. 1087

Sq Footage

BLOCK "A"

LOT 43	=	1.031 ACRES / 44,909 ϕ
LOT 44	=	0.944 ACRES / 41,111 ϕ
LOT 45	=	1.033 ACRES / 45,014 ϕ
LOT 46	=	0.970 ACRES / 42,240 ϕ

BLOCK "B"

LOT 4	=	0.574 ACRES / 24,998 ϕ
LOT 5	=	0.602 ACRES / 26,224 ϕ
LOT 6	=	0.684 ACRES / 29,793 ϕ

BLOCK "C"

LOT-1	=	0.550 ACRES / 23,972 ϕ
LOT 2	=	0.459 ACRES / 19,977 ϕ
LOT 3	=	0.494 ACRES / 21,504 ϕ
LOT 4	=	0.476 ACRES / 20,734 ϕ
LOT 5	=	0.504 ACRES / 21,964 ϕ
LOT 6	=	0.556 ACRES / 24,210 ϕ

BLOCK "A"

LOT 8	=	0.429 ACRES / 18,703 ϕ
LOT 9	=	0.429 ACRES / 18,703 ϕ

RAMBLE HILLS S/D

