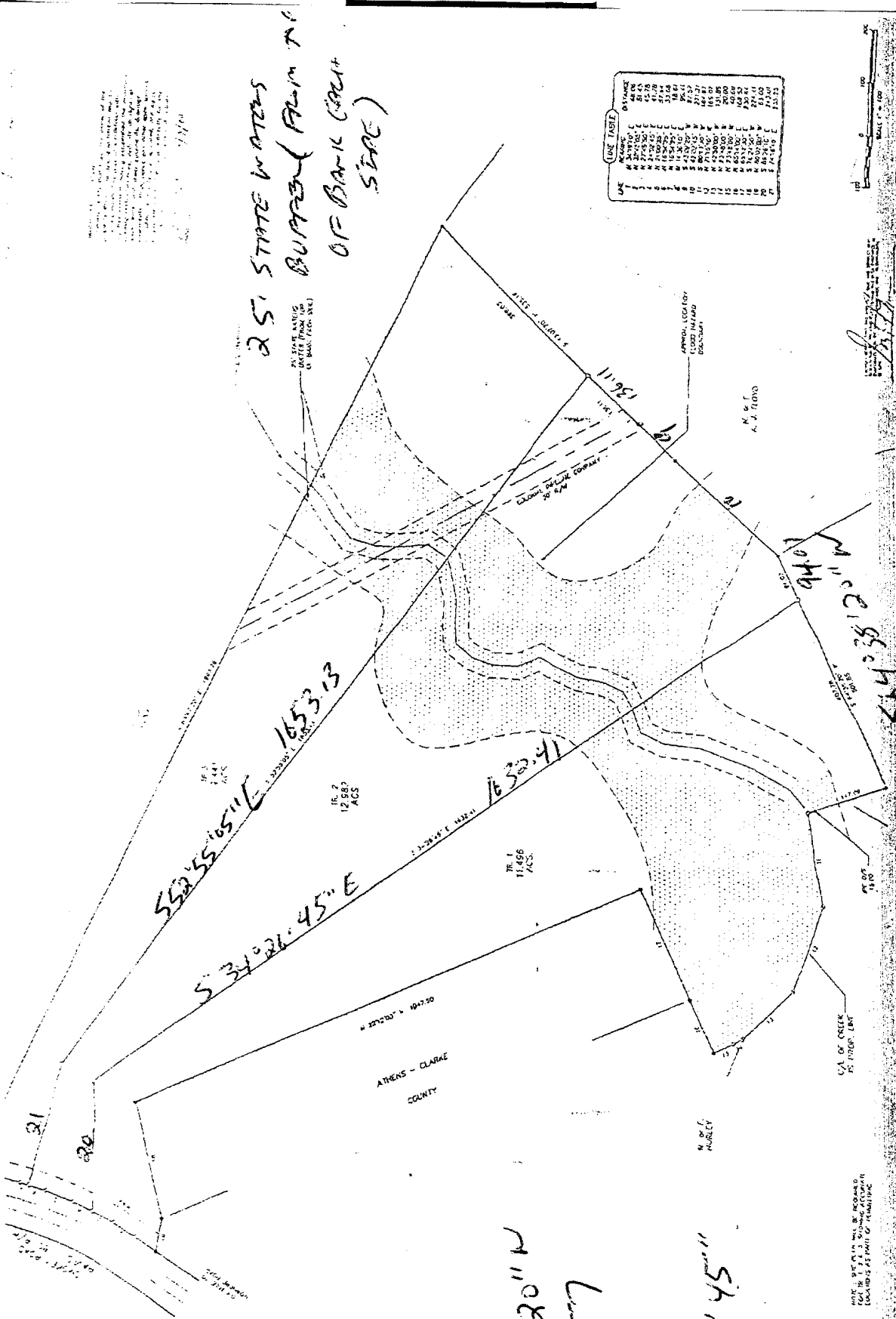




20 - S 89°26'10" E 245.01  
 21 - S 74°16'10" E 235.25



9 S 54°09'20" N 97.57  
 10 S 54°02'45" W 271.21

~~10 S 54°02'45" W 271.21~~

NOTE: THIS PLAN WAS RECORDED FOR THE STATE OF GEORGIA BY THE COUNTY CLERK OF ATHENS COUNTY