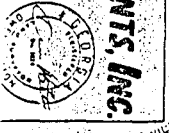


Sheet 1 of Field Sheet

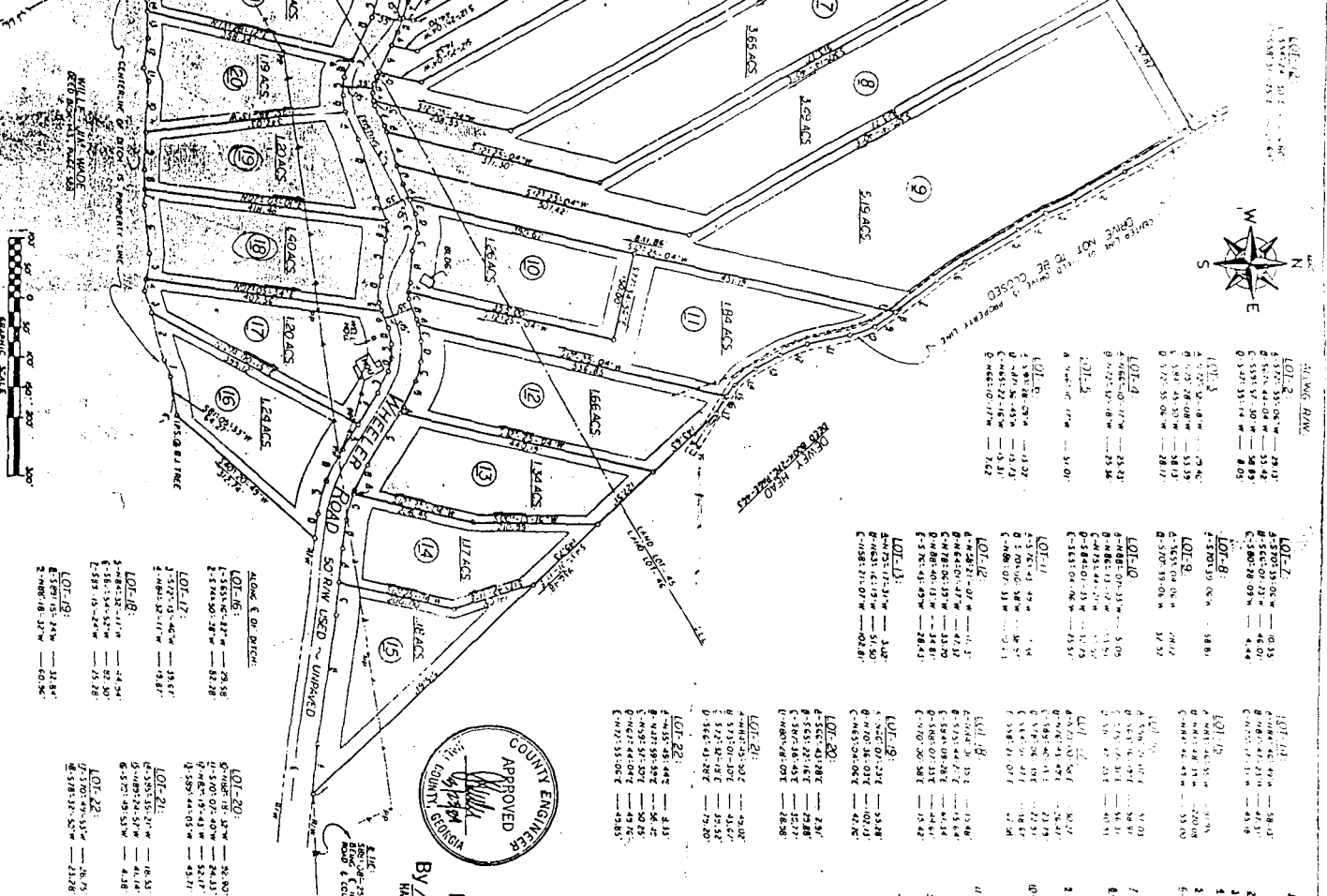
101-1	101-2	101-3	101-4	101-5	101-6	101-7	101-8	101-9	101-10	101-11	101-12	101-13	101-14	101-15	101-16	101-17	101-18	101-19	101-20	101-21	101-22	101-23	101-24	101-25	101-26	101-27	101-28	101-29	101-30	101-31	101-32	101-33	101-34	101-35	101-36	101-37	101-38	101-39	101-40	101-41	101-42	101-43	101-44	101-45	101-46	101-47	101-48	101-49	101-50	101-51	101-52	101-53	101-54	101-55	101-56	101-57	101-58	101-59	101-60	101-61	101-62	101-63	101-64	101-65	101-66	101-67	101-68	101-69	101-70	101-71	101-72	101-73	101-74	101-75	101-76	101-77	101-78	101-79	101-80	101-81	101-82	101-83	101-84	101-85	101-86	101-87	101-88	101-89	101-90	101-91	101-92	101-93	101-94	101-95	101-96	101-97	101-98	101-99	101-100
-------	-------	-------	-------	-------	-------	-------	-------	-------	--------	--------	--------	--------	--------	--------	--------	--------	--------	--------	--------	--------	--------	--------	--------	--------	--------	--------	--------	--------	--------	--------	--------	--------	--------	--------	--------	--------	--------	--------	--------	--------	--------	--------	--------	--------	--------	--------	--------	--------	--------	--------	--------	--------	--------	--------	--------	--------	--------	--------	--------	--------	--------	--------	--------	--------	--------	--------	--------	--------	--------	--------	--------	--------	--------	--------	--------	--------	--------	--------	--------	--------	--------	--------	--------	--------	--------	--------	--------	--------	--------	--------	--------	--------	--------	--------	--------	--------	--------	--------	---------

**SOMMA INVESTMENTS, INC.**  
 LOCATED IN LAND LOIS-45 & 46  
 5TH LAND DISTRICT GEORGIA  
 DISTRICT 13-14-1989

**DEDICATION CERTIFICATE**  
 (State of Georgia) (County of Hall)  
 The owner of the land shown on this plat and other matters in this certificate hereby certifies that the same is a duly authorized agency, subdivision and is being made from an actual survey and that the plat, articles, statements and other documents shown, which comprise a valid and correct description of the land, are true and correct, for the purposes therein expressed.  
 Owner: **Somma Investments, Inc.**  
 Date: **Sept. 21st 1989**



*Robert P. Hines*  
 10/23/1989



**RECORDING PERMIT**  
 By *[Signature]* 3/23/89  
 HALL COUNTY PLANNING COMMISSION

**APPROVED**  
 COUNTY ENGINEER  
 HALL COUNTY GEORGIA

**GENERAL NOTES**  
 1. THIS PLAT IS SUBJECT TO ALL EASEMENTS  
 2. ALL RIGHTS RESERVED ARE NOT SHOWN  
 3. ALL RIGHTS RESERVED ARE NOT SHOWN  
 4. ALL RIGHTS RESERVED ARE NOT SHOWN  
 5. ALL RIGHTS RESERVED ARE NOT SHOWN  
 6. ALL RIGHTS RESERVED ARE NOT SHOWN  
 7. ALL RIGHTS RESERVED ARE NOT SHOWN  
 8. ALL RIGHTS RESERVED ARE NOT SHOWN  
 9. ALL RIGHTS RESERVED ARE NOT SHOWN  
 10. ALL RIGHTS RESERVED ARE NOT SHOWN  
 11. ALL RIGHTS RESERVED ARE NOT SHOWN  
 12. ALL RIGHTS RESERVED ARE NOT SHOWN  
 13. ALL RIGHTS RESERVED ARE NOT SHOWN  
 14. ALL RIGHTS RESERVED ARE NOT SHOWN  
 15. ALL RIGHTS RESERVED ARE NOT SHOWN  
 16. ALL RIGHTS RESERVED ARE NOT SHOWN  
 17. ALL RIGHTS RESERVED ARE NOT SHOWN  
 18. ALL RIGHTS RESERVED ARE NOT SHOWN  
 19. ALL RIGHTS RESERVED ARE NOT SHOWN  
 20. ALL RIGHTS RESERVED ARE NOT SHOWN  
 21. ALL RIGHTS RESERVED ARE NOT SHOWN  
 22. ALL RIGHTS RESERVED ARE NOT SHOWN  
 23. ALL RIGHTS RESERVED ARE NOT SHOWN  
 24. ALL RIGHTS RESERVED ARE NOT SHOWN  
 25. ALL RIGHTS RESERVED ARE NOT SHOWN  
 26. ALL RIGHTS RESERVED ARE NOT SHOWN  
 27. ALL RIGHTS RESERVED ARE NOT SHOWN  
 28. ALL RIGHTS RESERVED ARE NOT SHOWN  
 29. ALL RIGHTS RESERVED ARE NOT SHOWN  
 30. ALL RIGHTS RESERVED ARE NOT SHOWN

**RECORDING PERMIT**  
 By *[Signature]* 3/23/89  
 HALL COUNTY PLANNING COMMISSION

**APPROVED**  
 COUNTY ENGINEER  
 HALL COUNTY GEORGIA

**RECORDING PERMIT**  
 By *[Signature]* 3/23/89  
 HALL COUNTY PLANNING COMMISSION

**APPROVED**  
 COUNTY ENGINEER  
 HALL COUNTY GEORGIA