

Whispering Pines

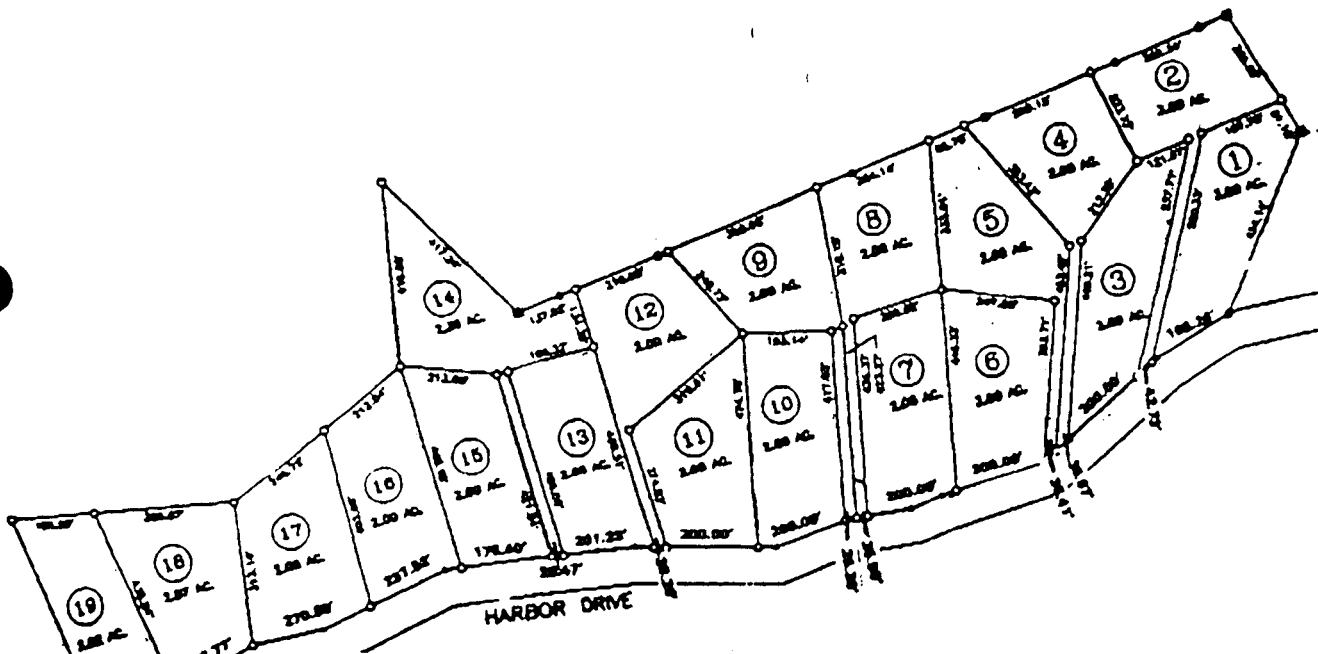


LANDHEADQUARTERS

...Where Country Living Begins...

PUTNAM COUNTY WHISPERING PINES OF LAKE OCONEE

CONVENIENT TO I-20 AND EATONTON

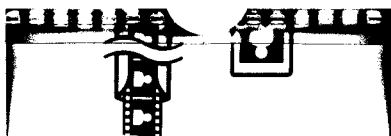


DIRECTIONS:

FROM I-75: TAKE EXIT 67
(THIS IS HWY. 16) GO STRAIGHT
THRU JACKSON AND DOWN THRU
EATONTON ABOUT 6 1/2 MILES PAST
EATONTON TURN LEFT ONTO LONG
SHOALS RD. FOLLOW THIS OUT APPROX.
2 1/2 MILES TO HARBOR DR. THE PROPERTY
WILL BE ON THE LEFT OF HARBOR DR. AND
ON THE RIGHT OF LONG SHOALS RD.

FROM I-20:

TAKE EXIT 53 (HWY 44) TOWARDS
EATONTON GO IN APPROX 6 MILES
WATCH FOR THE PYRAMID AND TURN
LEFT ON TO OLD PHOENIX RD. GO APPROX.
5 MILES TO DEAD END ON HWY. 16 TURN LEFT
AND GO OUT APPROX. 3 1/2 MILES TO LONG SHOALS
RD. TURN LEFT AND GO OUT APPROX. 2 1/2 MILES
TO HARBOR DR. PROPERTY STARTS AT THIS
INTERSECTION.



Whispering Pines



LANDHEADQUARTERS

...Where Country Living Begins...

PUTNAM COUNTY WHISPERING PINES OF LAKE OCONEE

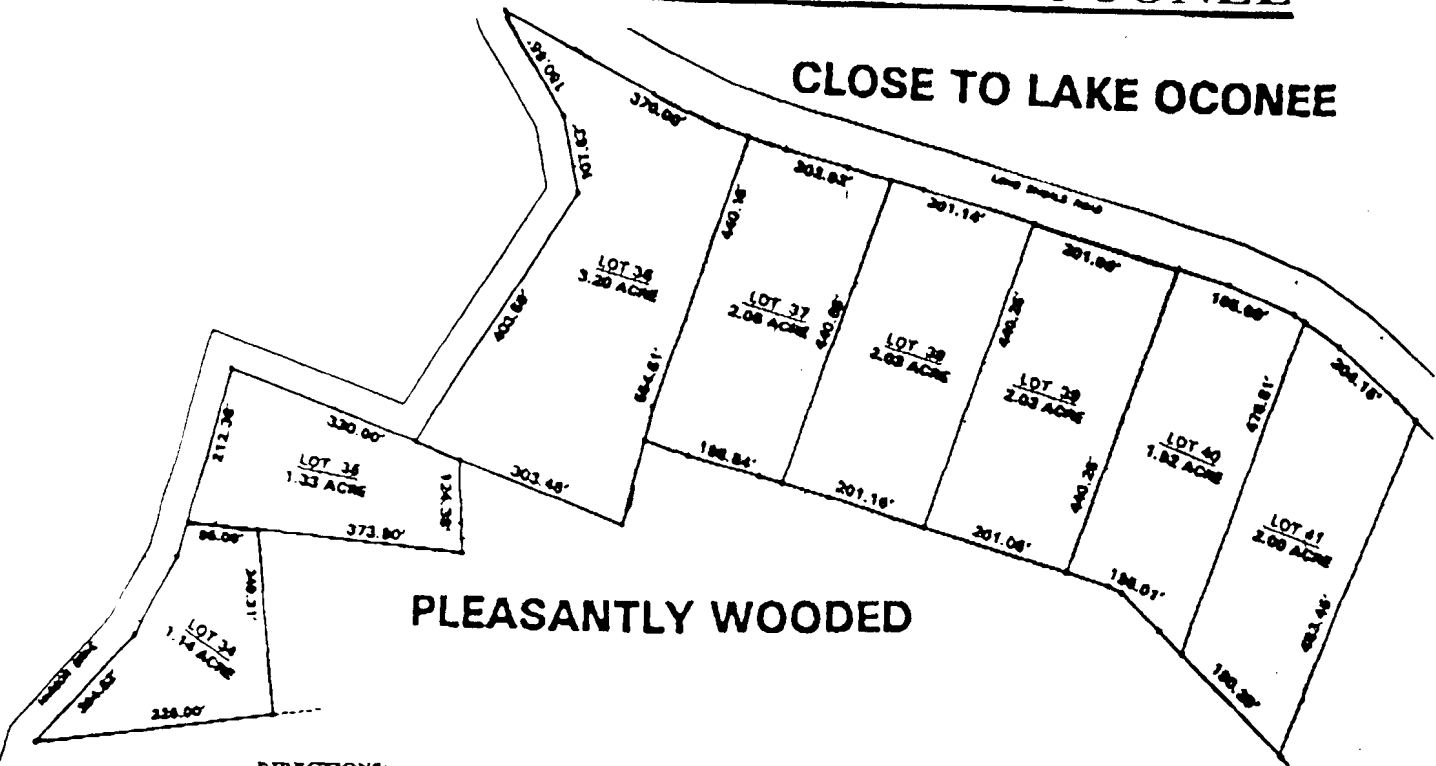
CLOSE TO LAKE OCONEE

PLEASANTLY WOODED

DIRECTIONS:

FROM I-75: TAKE EXIT 67
(THIS IS HWY. 16) GO STRAIGHT
THRU JACKSON AND DOWN THRU
EATONTON ABOUT 6 1/2 MILES PAST
EATONTON TURN LEFT ONTO LONG
SHOALS RD. FOLLOW THIS OUT APPROX.
2 1/2 MILES TO HARBOR DR. THE PROPERTY
WILL BE ON THE LEFT OF HARBOR DR. AND
ON THE RIGHT OF LONG SHOALS RD.

FROM I-20:
TAKE EXIT 53 (HWY 44) TOWARDS
EATONTON GO IN APPROX 6 MILES
WATCH FOR THE PYRAMID AND TURN
LEFT ON TO OLD PHOENIX RD. GO APPROX.
5 MILES TO DEAD END ON HWY. 16 TURN LEFT
AND GO OUT APPROX. 1 1/2 MILES TO LONG SHOALS
RD. TURN LEFT AND GO OUT APPROX. 2 1/2 MILES
TO HARBOR DR. PROPERTY STARTS AT THIS
INTERSECTION.



Whispering Pines

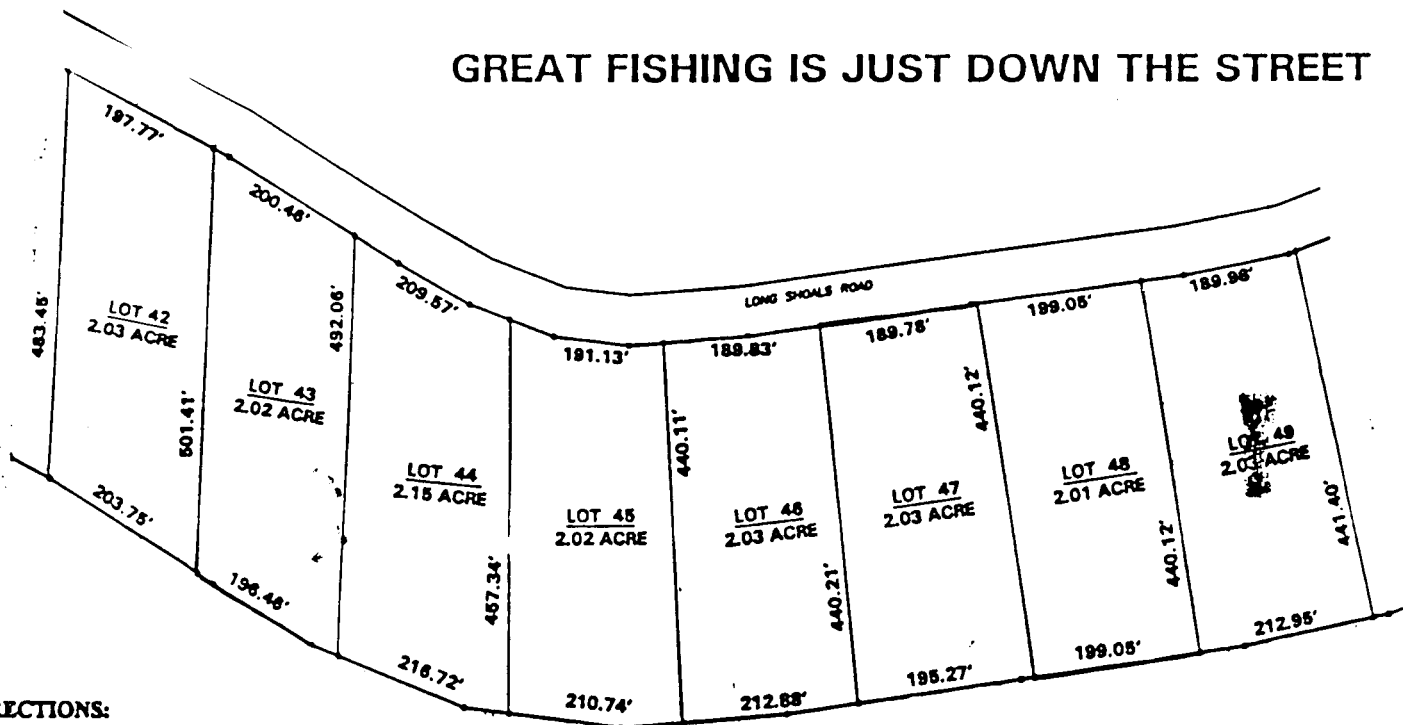


LANDHEADQUARTERS

...Where Country Living Begins...

PUTNAM COUNTY WHISPERING PINES OF LAKE OCONEE

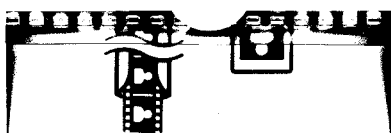
GREAT FISHING IS JUST DOWN THE STREET



DIRECTIONS:

FROM I-75: TAKE EXIT 67
 (THIS IS HWY. 16) GO STRAIGHT
 THRU JACKSON AND DOWN THRU
 EATONTON ABOUT 6 1/2 MILES PAST
 EATONTON TURN LEFT ONTO LONG
 SHOALS RD. FOLLOW THIS OUT APPROX.
 2 1/4 MILES TO HARBOR DR. THE PROPERTY
 WILL BE ON THE LEFT OF HARBOR DR. AND
 ON THE RIGHT OF LONG SHOALS RD.

FROM I-20:
 TAKE EXIT 45 (HWY 44) TOWARDS
 EATONTON GO IN APPROX 6 MILES
 WATCH FOR THE PYRAMID AND TURN
 LEFT ON TO OLD PHOENIX RD. GO APPROX.
 5 MILES TO DEAD END ON HWY. 16 TURN LEFT
 AND GO OUT APPROX. 3 1/2 MILES TO LONG SHOALS
 RD. TURN LEFT AND GO OUT APPROX. 2 1/2 MILES
 TO HARBOR DR. PROPERTY STARTS AT THIS
 INTERSECTION.



Whispering Pines



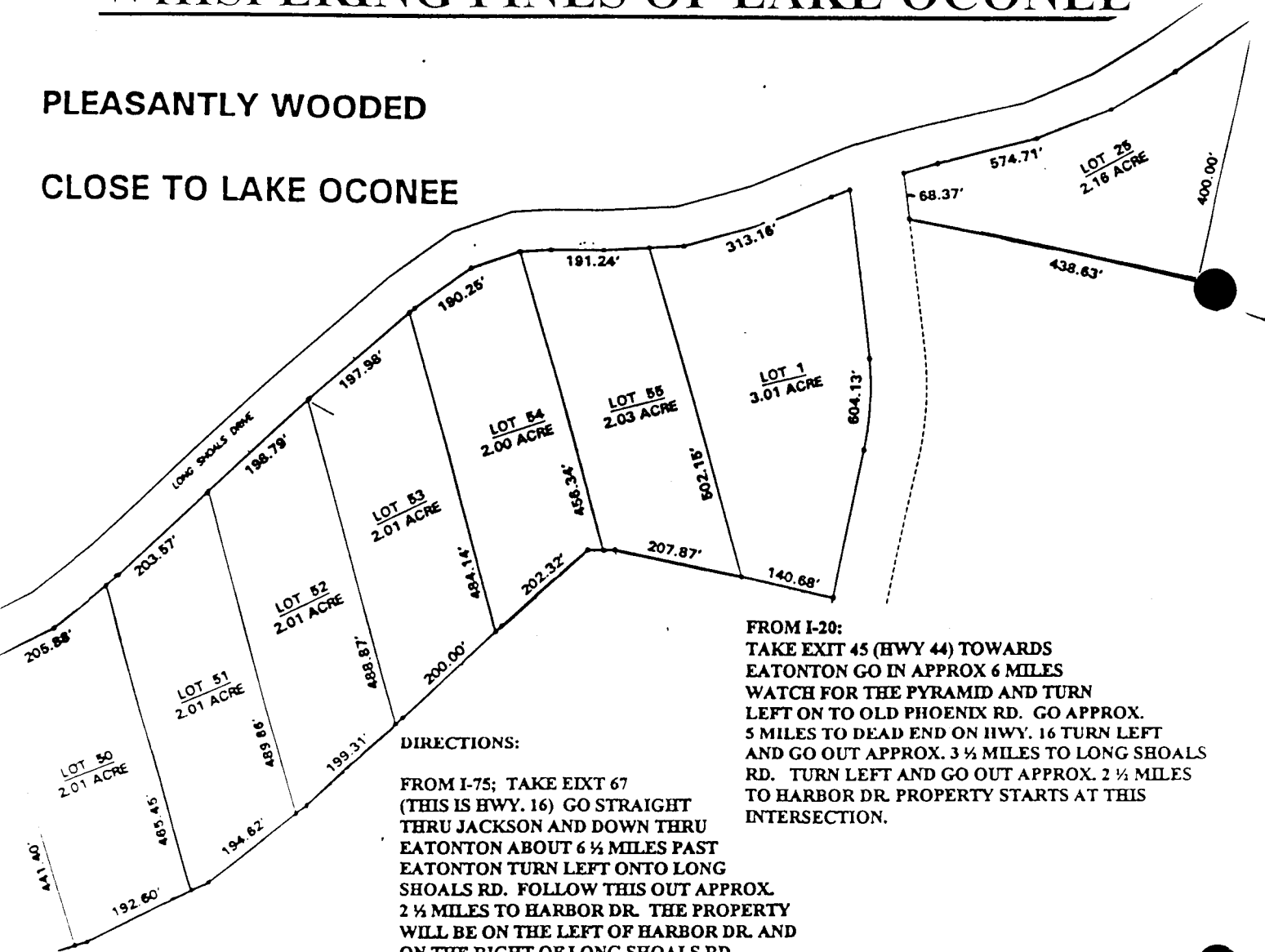
LANDHEADQUARTERS

...Where Country Living Begins...

PUTNAM COUNTY WHISPERING PINES OF LAKE OCONEE

PLEASANTLY WOODED

CLOSE TO LAKE OCONEE



DIRECTIONS:

FROM I-75; TAKE EXIT 67
(THIS IS HWY. 16) GO STRAIGHT
THRU JACKSON AND DOWN THRU
EATONTON ABOUT 6 1/2 MILES PAST
EATONTON TURN LEFT ONTO LONG
SHOALS RD. FOLLOW THIS OUT APPROX.
2 1/2 MILES TO HARBOR DR. THE PROPERTY
WILL BE ON THE LEFT OF HARBOR DR. AND
ON THE RIGHT OF LONG SHOALS RD.

FROM I-20:

TAKE EXIT 45 (HWY 44) TOWARDS
EATONTON GO IN APPROX 6 MILES
WATCH FOR THE PYRAMID AND TURN
LEFT ON TO OLD PHOENIX RD. GO APPROX.
5 MILES TO DEAD END ON HWY. 16 TURN LEFT
AND GO OUT APPROX. 3 1/2 MILES TO LONG SHOALS
RD. TURN LEFT AND GO OUT APPROX. 2 1/2 MILES
TO HARBOR DR. PROPERTY STARTS AT THIS
INTERSECTION.

Whispering Pines

441 60E
0.070'

2
220.91 AC

