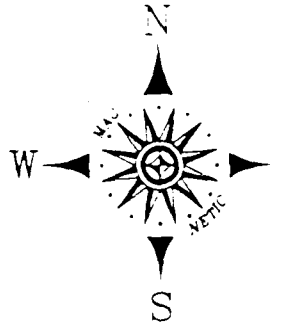
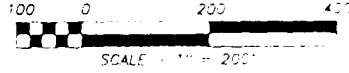
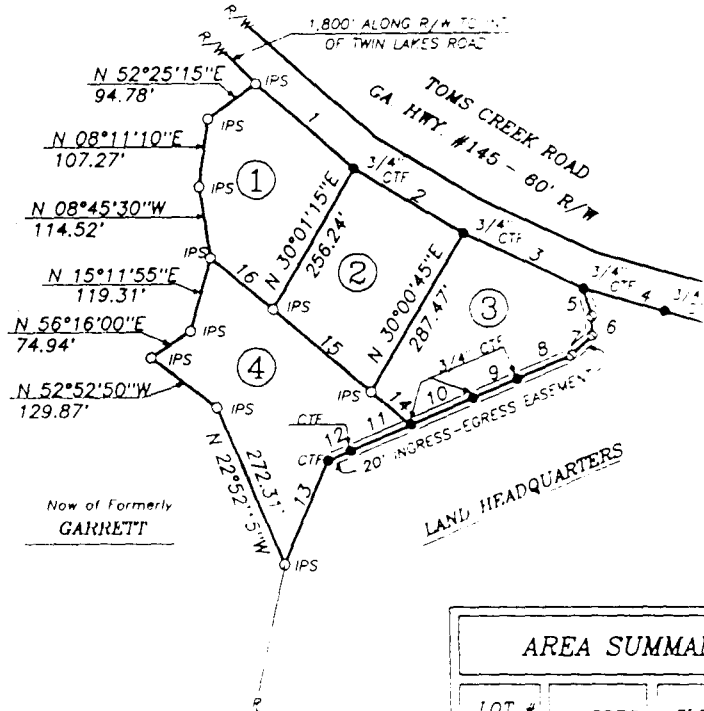


Tom's Creek Phase I

COURSE	BEARING	DISTANCE
1	S 48°10'05"E	206.12'
2	S 58°58'10"E	199.97'
3	S 64°57'20"E	210.60'
4	S 74°38'30"E	137.17'
5	S 17°46'00"E	45.72'
6	S 01°51'50"E	30.32'
7	S 47°22'50"W	45.25'
8	S 67°09'40"W	93.44'
9	S 67°13'00"W	75.37'
10	S 66°51'45"W	106.83'
11	S 66°52'25"W	104.74'
12	S 66°51'35"W	38.78'
13	S 22°35'05"W	178.92'
14	N 50°07'05"W	81.30'
15	N 50°07'05"W	202.98'
16	N 50°07'05"W	128.15'



Now of Formerly
CRAWFORD



- KEY:**
- = IRON PIN FOUND
 - = 1/2" REBAR SET
 - ⊙ = POINT ONLY
 - ⊖ = IRON PIN FOUND
 - ⊕ = 1/2" REBAR SET
 - ⊗ = IRON PIN FOUND
 - ⊘ = 1/2" REBAR SET
 - RBF = REBAR FOUND
 - CTF = OPEN TOP PIPE FND.
 - CTF = CRIMP TOP PIPE FND.
 - CMF = CONCRETE MON. FOUND
 - R = PROPERTY LINE
 - ⊙ = CENTERLINE
 - N/S = NAIL SET
 - O/S = OFFSET
 - P.O.B. = POINT OF BEGINNING

THE FIELD EQUIPMENT USED FOR THIS SURVEY WAS A SOKIA SET 5A TOTAL STATION.
 THE FIELD DATA UPON WHICH THIS PLAT IS BASED HAS A CLOSURE PRECISION OF ONE FOOT IN 15000 FEET AND AN ANGULAR ERROR OF SEC. PER ANGLE POINT AND WAS ADJUSTED USING NO RULE. THIS PLAT HAS BEEN CALCULATED FOR CLOSURE AND IS FOUND TO BE ACCURATE WITHIN ONE FOOT IN AS SHOWN FEET.

I HEREBY CERTIFY, THAT IN MY OPINION THIS IS A CORRECT REPRESENTATION OF THE LAND PLATTED AND HAS BEEN PREPARED IN CONFORMITY WITH THE MINIMUM STANDARDS AND REQUIREMENTS OF THE LAW.

THIS PLAT IS SUBJECT TO ANY EASEMENTS AND/OR RIGHTS OF WAY HERETOFORE GRANTED

NOTE: THIS PLAT DOES NOT REQUIRE APPROVAL FROM THE STEPHENS COUNTY PLANNING COMMISSION RELATIVE TO THE PROVISIONS OF CODE-SECTION 15-6-67 OF THE OFFICIAL CODE OF GEORGIA AS AMMENDED 1990. (SENATE BILL NO 735)

AREA SUMMARY		
LOT #	ACRES	CLO.
1	1.207	125
2	1.248	110
3	1.325	80
4	1.688	905

SURVEY FOR: SOMMA INVESTMENTS, INC.		
COUNTY: STEPHENS	G.M.D.: 287	STATE: GEORGIA
DATE: FEBRUARY 18, 1999	SCALE: 1" = 200'	PARTY CHIEF: WSB
SURVEYED BY: BAUKNIGHT & ASSOCIATES, INC.		DRAWN BY: LMS
W. SLATE BAUKNIGHT GEORGIA RLS # 2534		APPROVED BY: WSB
5397 BETHANY BOWERSVILLE RD. CANON, GA. 30520		CRD FILE: LNDHQ2
706-376-5946 706-245-0927 CALL TOLL FREE 1-888-376-5946		PLI FILE: LNDHQ2A



16 4/81

