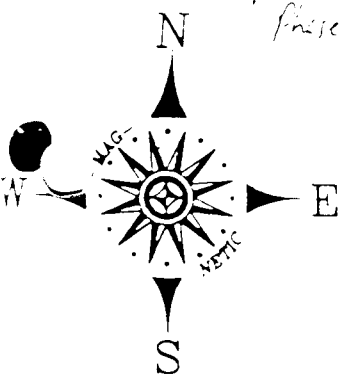


Tom's Creek Phase II

Tom's Creek Phase II

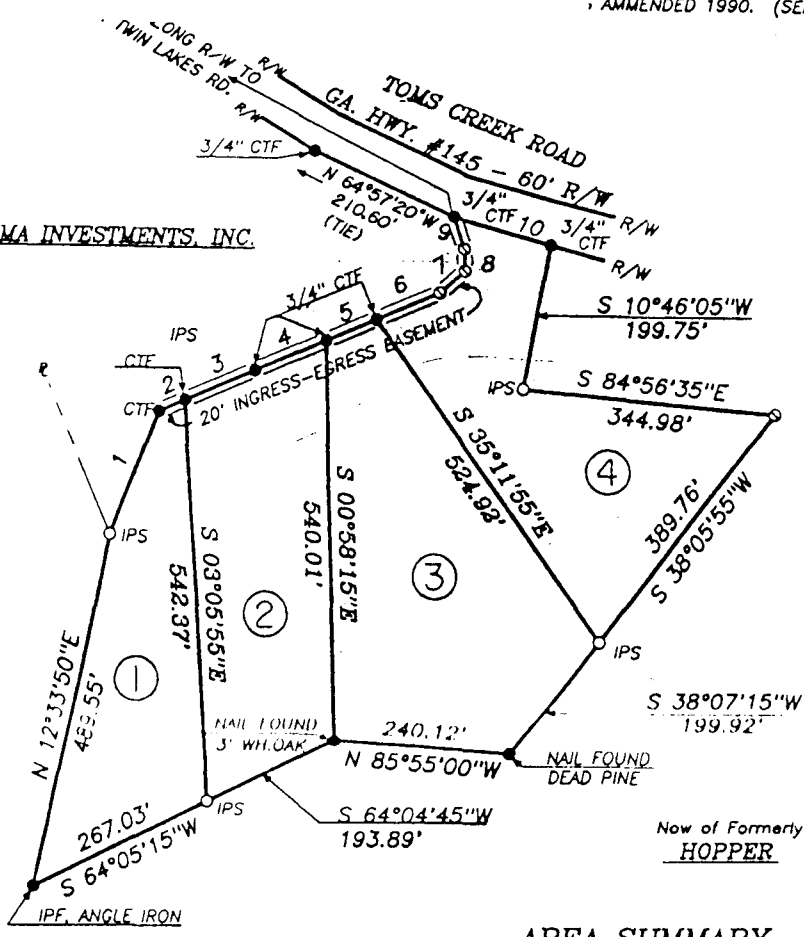
REQUIRE APPROVAL FROM
PLANNING COMMISSION RELATIVE
TO SECTION 15-6-67 OF THE
ZONING ORDINANCE AMENDED 1990. (SENATE)



SOKMA INVESTMENTS, INC.

Now of Formerly
GARRETT

Now of Formerly
HOPPER



LINE TABLE

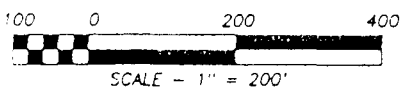
COURSE	BEARING	DISTANCE
1	N 22°35'05"E	178.92'
2	N 66°51'35"E	38.78'
3	N 66°52'25"E	104.74'
4	N 66°51'45"E	106.83'
5	N 67°13'00"E	75.37'
6	N 67°09'40"E	93.44'
7	N 47°22'50"E	45.25'
8	N 01°51'50"W	30.32'
9	N 17°46'00"W	45.72'
10	S 74°38'30"E	137.17'

THE FIELD EQUIPMENT USED FOR THIS SURVEY
WAS A SOKKA SET SA TOTAL STATION

THE FIELD DATA UPON WHICH THIS PLAT IS
BASED HAS A CLOSURE PRECISION OF ONE
FOOT IN 15000 FEET AND AN ANGULAR
ERROR OF 1 SEC PER ANGLE POINT AND
HAS ADJUSTED USING MC RULE. THIS
PLAT HAS BEEN CALCULATED FOR CLOSURE
AND IS FOUND TO BE ACCURATE WITHIN ONE
FOOT IN AS SHOWN FEET.

HEREBY CERTIFY, THAT IN MY OPINION
THIS IS A CORRECT REPRESENTATION OF THE
FIELD DATA AND HAS BEEN PREPARED IN
ACCORDANCE WITH THE CURRENT STANDARDS
AND REQUIREMENTS OF THE LAW.

THIS PLAT IS SUBJECT TO ANY
EASEMENTS AND/OR RIGHTS
OF WAY HERETOFORE GRANTED.



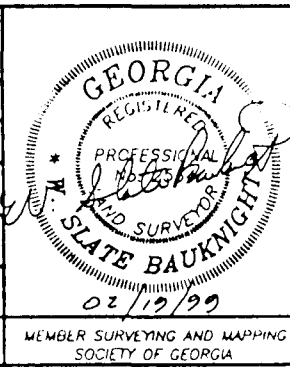
AREA SUMMARY

LOT #	ACRES	CLOSURE
1	1.940	597,877
2	2.327	159,545
3	3.164	98,783
4	2.569	368,207

BY FOR

LAND HEADQUARTERS

DATE: FEBRUARY 16, 1999	SCALE: 1" = 200'	STATE: GEORGIA
		PARTY CHIEF: WSB
		DRAWN BY: APB
		APPROVED BY: WSB
		CRD FILE: LNDHQ2
		PLI FILE: LNDHQ2B



- KEY
- = IRON PIN FOUND
 - = 1/2" REBAR SET
 - = POINT ONLY
 - IPF = IRON PIN FOUND
 - IPS = 1/2" REBAR SET
 - RBF = REBAR FOUND
 - OTF = OPEN TOP PIPE FND.
 - CTF = CRIMP TOP PIPE FND.
 - CMF = CONCRETE MON. FOUND
 - P = PROPERTY LINE
 - C = CENTERLINE
 - N/S = NAIL SET
 - O/S = OFFSET
 - P.O.B. = POINT OF BEGINNING

SLATE BAUKNIGHT & ASSOCIATES, INC.

SLATE BAUKNIGHT
GEORGIA PLS # 2534

1151 BETHANY BOWERSVILLE RD
DANDY, GA 30520
770-241-1927
770-241-1928
770-241-1929

