

PS - FROM PIN SET  
PF - FROM PIN FOUND  
O/S - OFF SET  
L - CENTER LINE  
FROM PIN SET OR LOT CORNER  
UNLESS OTHERWISE NOTED.

TOTAL AREA = 23.81 ACRES

# BEN'S CREEK

FOR

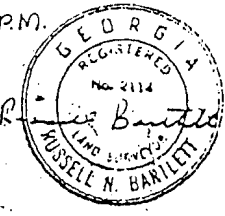
SOMMA INVESTMENTS, INC.

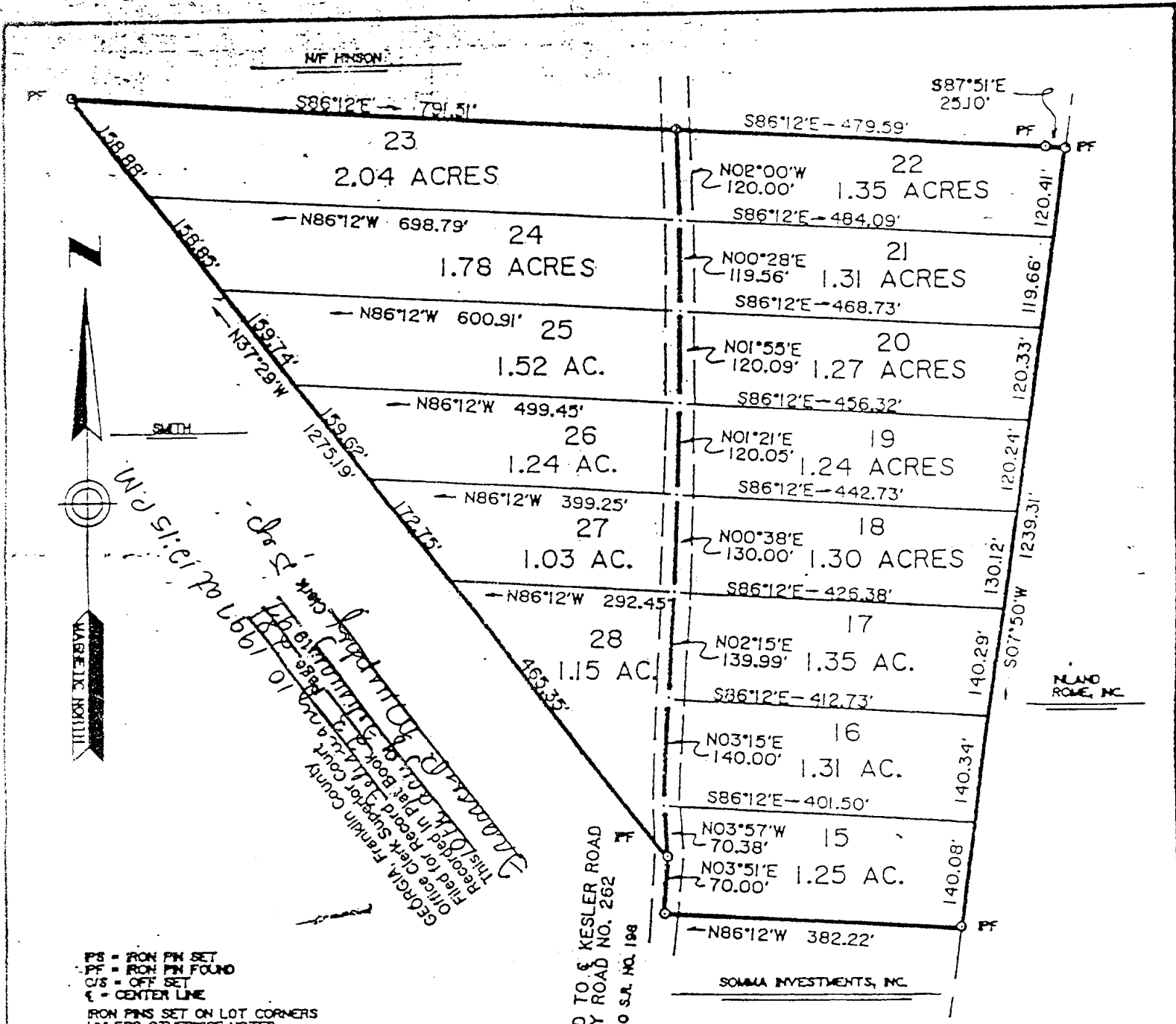
COUNTY: FRANKLIN, GEORGIA  
GMD: 812  
DATE: 04-OCT-1989  
SCALE: 1" = 200'  
FB: 151  
JOB: LONE

SURVEYED BY:  
RUSSELL N. BARTLETT  
RLS NO. 2114  
ROUTE 2, BOX 226  
CANON, GA. 30520  
(404) 356-4488

THIS SURVEY MADE WITH A TOPCON CTS-38 TOTAL STATION.  
THE ANGULAR ERROR IS 0" OF 03" FOR ANGLE. THE PRECISION  
RATIO IS 1 PART IN 22,500.

GEORGIA, Franklin County  
Office Clerk Superior Court  
Filed for Record *September 10, 1997 at 10:15 P.M.*  
Recorded in Plat Book *24* Page *19*  
This *with duty of file* *19 97*  
*James O. Murphy, Sup.*





PF = IRON PIN SET  
 PF = IRON PIN FOUND  
 C/S = OFF SET  
 CL = CENTER LINE  
 IRON PINS SET ON LOT CORNERS  
 UNLESS OTHERWISE NOTED

GEORGIA, Franklin County  
 Office Clerk Superior Court  
 Filed for Record at 11:14 a.m. 10/10/89  
 The above described property  
 is the subject of Deed  
 No. 89-88  
 recorded in Book 272  
 Page 107  
 W.J. 51: E 170 107 107 107

TOTAL AREA = 19.14

PHASE TWO OF:

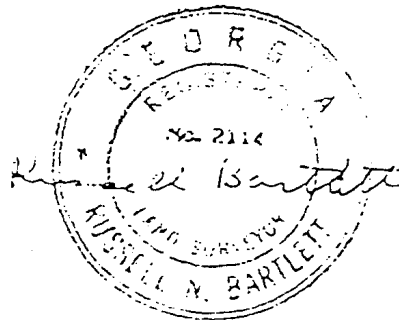
# BEN'S CREEK

FOR:

SOMMA INVESTMENTS, INC.  
 COUNTY: FRANKLIN, GEORGIA  
 GMD: 812  
 DATE: 04-OCT-1989  
 SCALE: 1" = 200'  
 FB: 151  
 JOB: LONIE

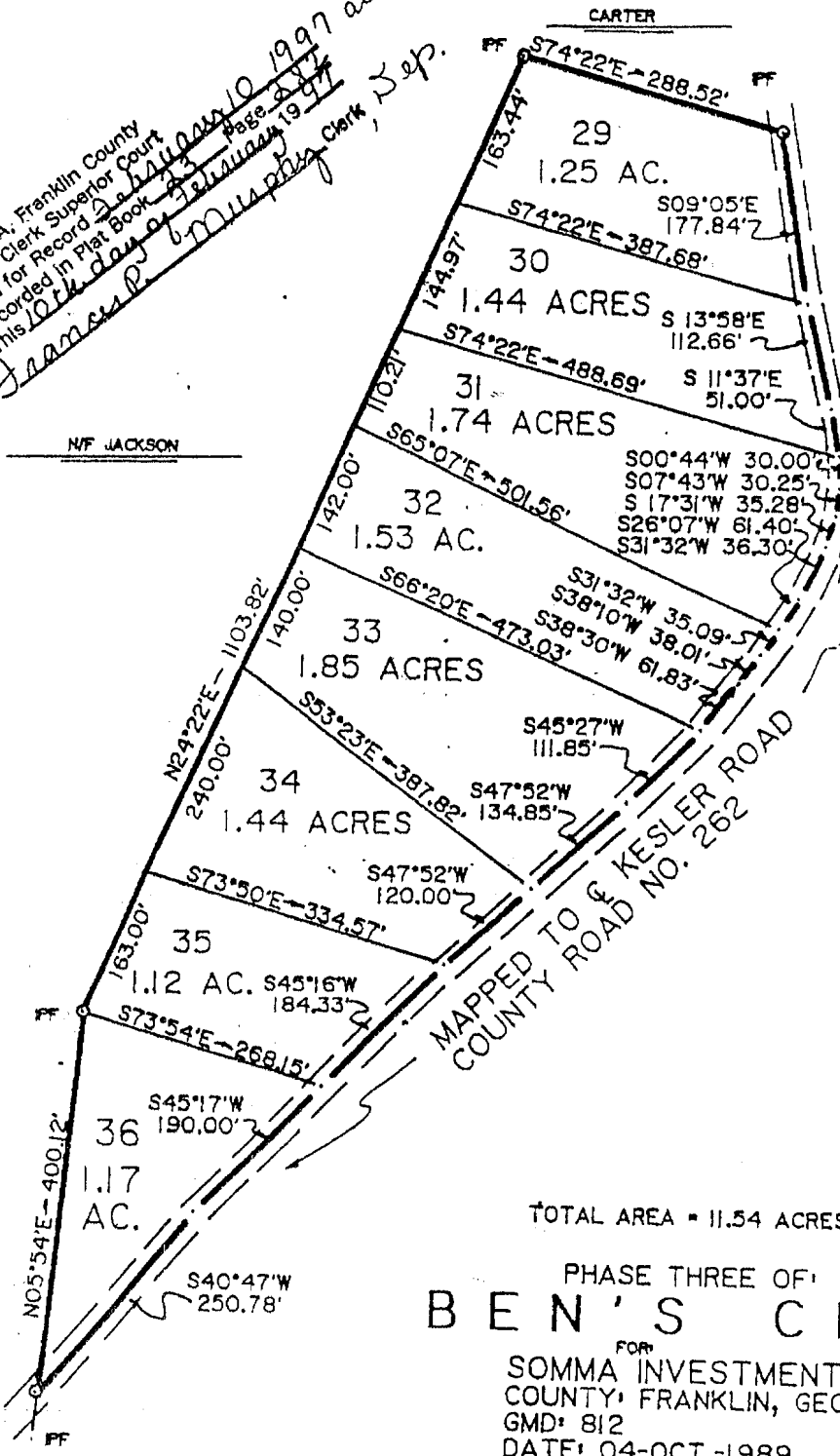
SURVEYED BY:  
 RUSSELL N. BARTLETT  
 RLS NO. 2114  
 ROUTE 2, BOX 226  
 CANON, GA. 30520  
 (404) 356-4488

THIS SURVEY MADE WITH A TOPCON GTS-38 TOTAL STATION.  
 THE ANGULAR ERROR IS 0" 0' 03" PER ANGLE. THE PRECISION  
 RATIO IS 1 PART IN 22,563

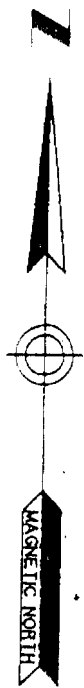


1-17-90

GEORGIA, Franklin County  
 Office Clerk Superior Court  
 Filed for Record on 23 January 1997 at 12:15 P.M.  
 Recorded in Plat Book 23 Page 217  
 This 10th day of February 1997  
*James P. Murphy* Clerk, Sep.



N/F JACKSON



PS - IRON PIN SET  
 PF - IRON PIN FOUND  
 O/S - OFF SET  
 C - CENTER LINE  
 IRON PINS SET ON LOT CORNERS  
 UNLESS OTHERWISE NOTED

TOTAL AREA = 11.54 ACRES

PHASE THREE OF:  
**BEN'S CREEK**

FOR:  
 SOMMA INVESTMENTS, INC.  
 COUNTY, FRANKLIN, GEORGIA  
 GMD: 812  
 DATE: 04-OCT-1989  
 SCALE: 1" = 200'  
 FB: 151  
 JOB: LONIE

SURVEYED BY:  
 RUSSELL N. BARTLETT  
 RLS NO. 2114  
 ROUTE 2, BOX 226  
 CANON, GA. 30520  
 (404) 356-4488

S05°54'W 52.01'

885.3' TO S.E. NO. 198



*Russell N. Bartlett*

THIS SURVEY MADE WITH A TOPCON GTS-3B TOTAL STATION.  
 THE ANGULAR ERROR IS 0" 03' PER ANGLE. THE PRECISION  
 RATIO IS 1 PART IN 22,563